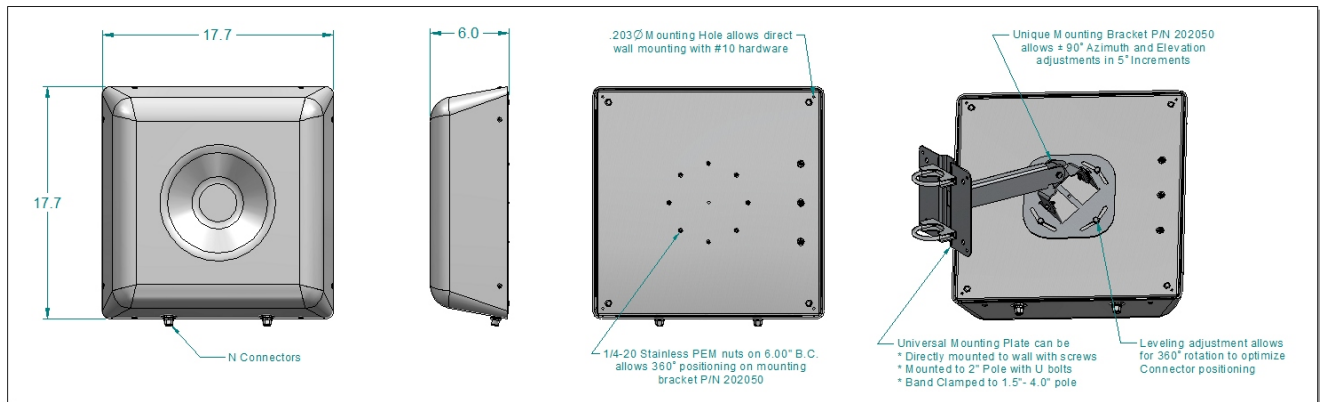




Quad Band Cross Polarized Directional Antenna

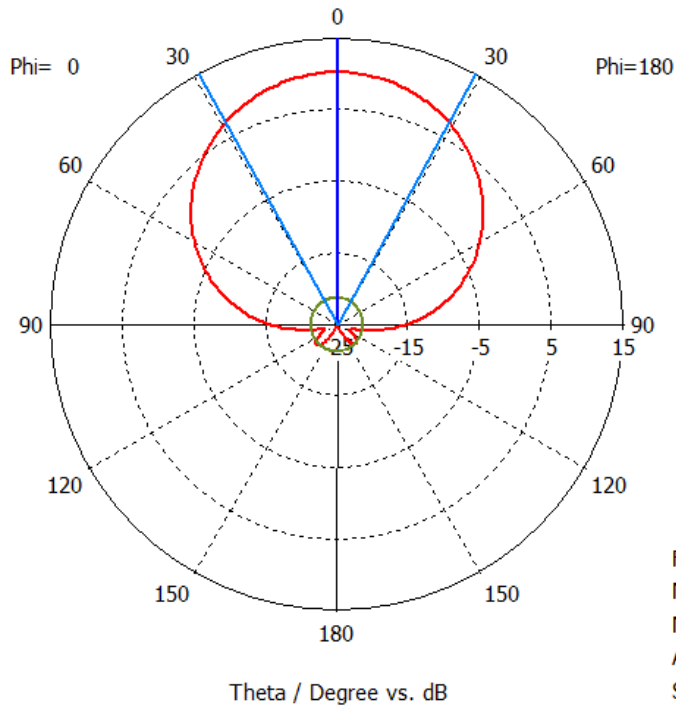
Specifications

Frequency Band	698 MHz to 896 MHz and 1710 to 2170 MHz
Polarization	Linear, Dual Slant 45
VSWR / Impedance	1.5:1 / 50 Ohms
Gain	9dBi
Port-to-Port Isolation – cross polarized ports	40dB
Port-to-Port Isolation – co-polarized ports	Low Band and High Band Dplxed to a single connector
Cross pol gain	Less than -9dBi in forward hemi-sphere
Cross polarized discrimination inside the 3dB co-polarized beamwidth	30dB
3 dB Beamwidth Azimuth and Elevation	52° low band and 47° high band
Front to Back Ratio	20 dB
Input Power	100 Watts
Passive Intermodulation (2 x 20W)	IM3: <-156dBc
Size / Weight	17.7" x 17.7" x 6.0" / 11 lbs. without Mounting Bracket
Connector / Location	Type N x 2 (one per polarization)
Mounting	Direct Wall Mount or Full Articulation Mounting Bracket
Application Environment	IP-54



ASI-722DSBO Quad Band Cross Polarized Directional Antenna

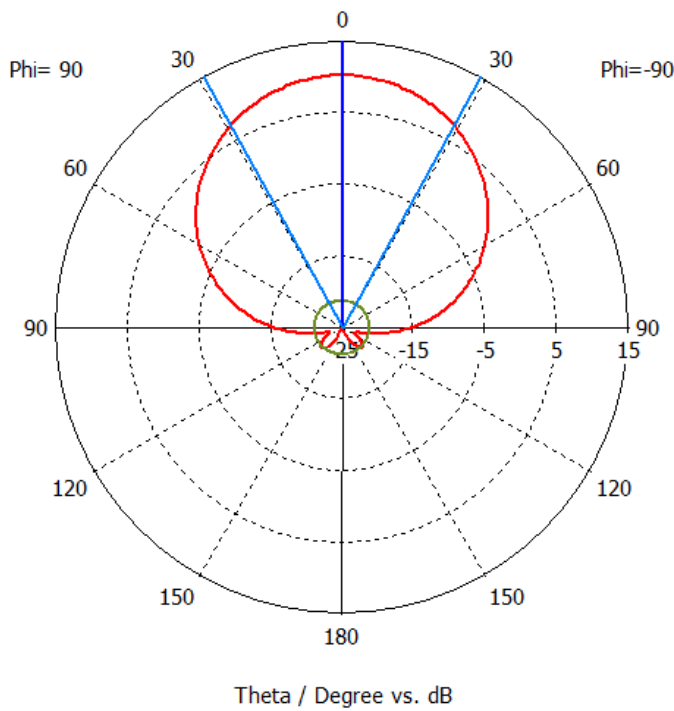
Farfield Realized Gain Ludwig 3 Copolar (Phi=0)



farfield (f=.698) [4]

Frequency = 0.698
Main lobe magnitude = 10.2 dB
Main lobe direction = 0.0 deg.
Angular width (3 dB) = 57.7 deg.
Side lobe level = -31.3 dB

Farfield Realized Gain Ludwig 3 Copolar (Phi=90)

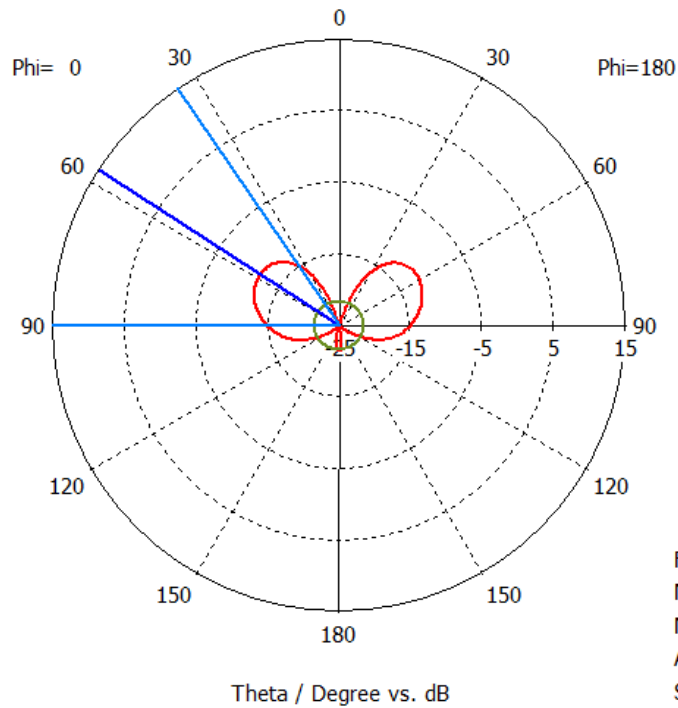


farfield (f=.698) [4]

Frequency = 0.698
Main lobe magnitude = 10.2 dB
Main lobe direction = 0.0 deg.
Angular width (3 dB) = 57.8 deg.
Side lobe level = -31.3 dB

ASI-722DSBO Quad Band Cross Polarized Directional Antenna

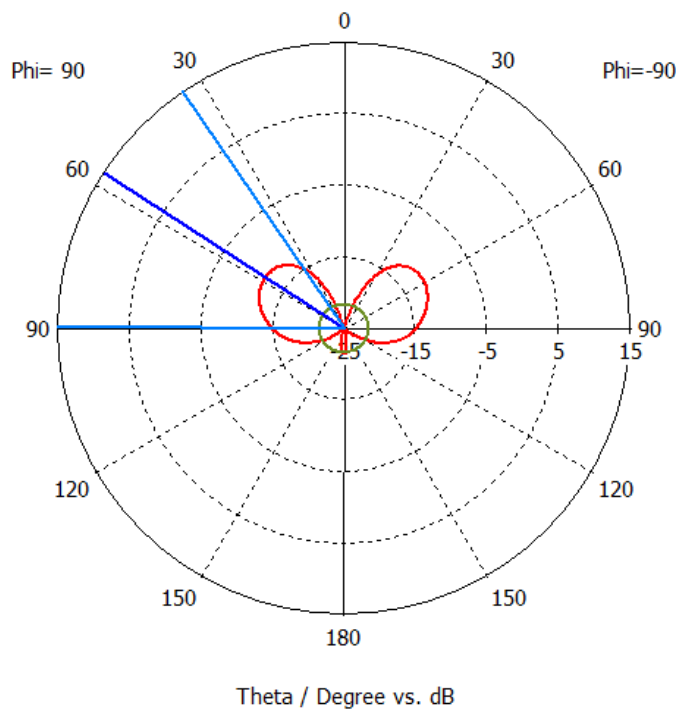
Farfield Realized Gain Ludwig 3 Crosspolar (Phi=0)



farfield (f=.698) [4]

Frequency = 0.698
Main lobe magnitude = -11.9 dB
Main lobe direction = 57.0 deg.
Angular width (3 dB) = 55.4 deg.
Side lobe level = -9.5 dB

Farfield Realized Gain Ludwig 3 Crosspolar (Phi=90)

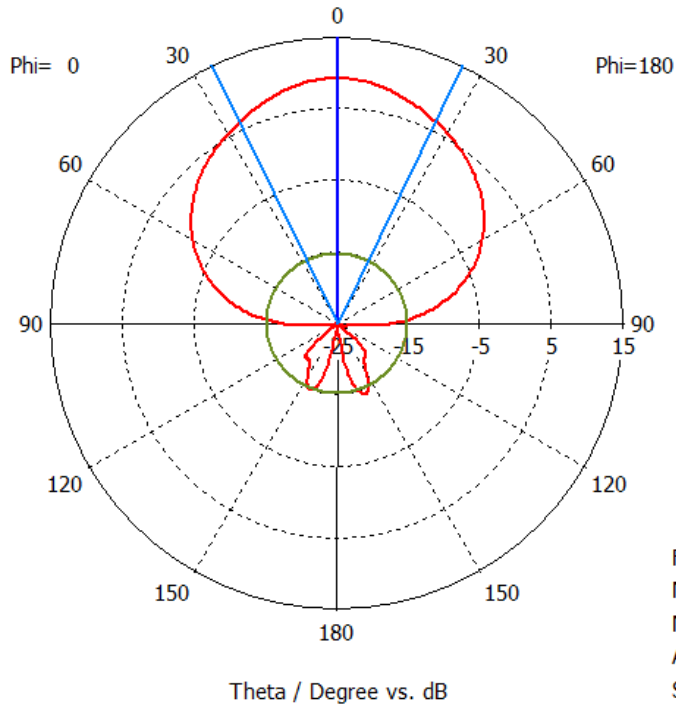


farfield (f=.698) [4]

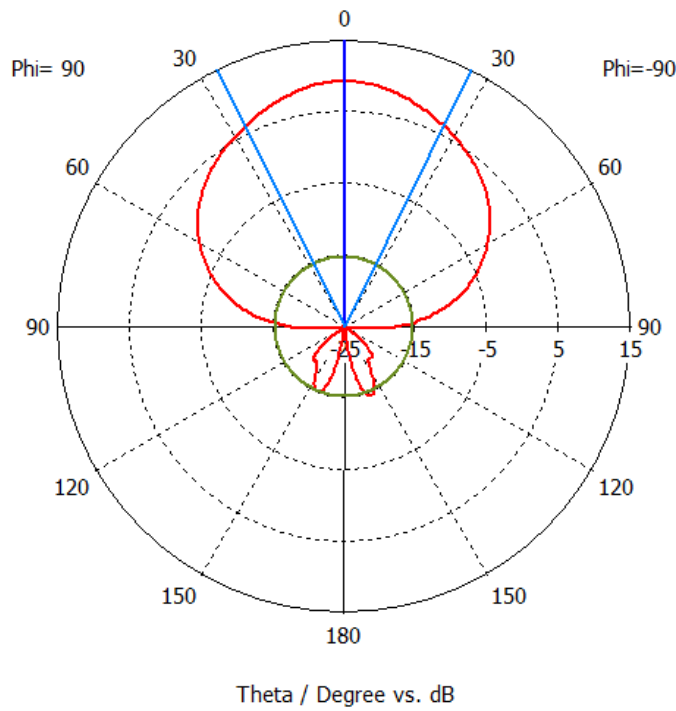
Frequency = 0.698
Main lobe magnitude = -11.9 dB
Main lobe direction = 57.0 deg.
Angular width (3 dB) = 55.2 deg.
Side lobe level = -9.5 dB

ASI-722DSBO Quad Band Cross Polarized Directional Antenna

Farfield Realized Gain Ludwig 3 Copolar (Phi=0)

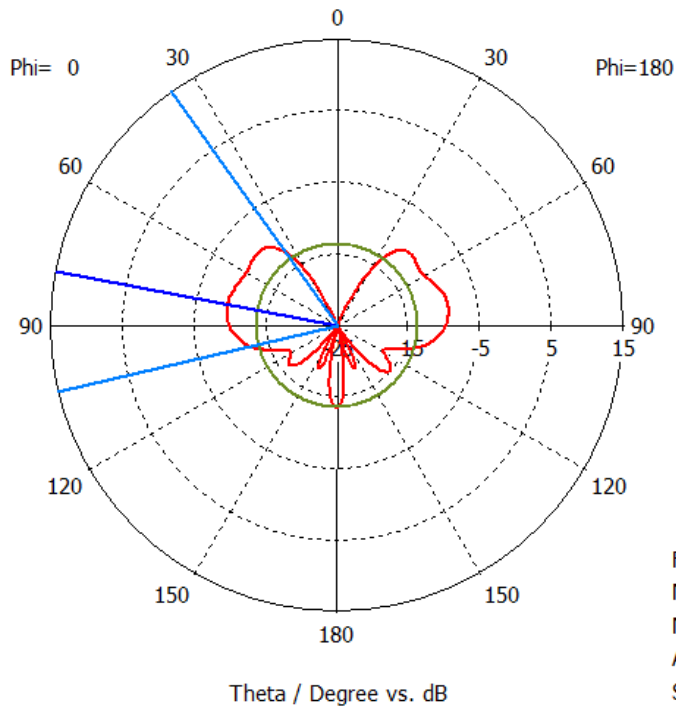


Farfield Realized Gain Ludwig 3 Copolar (Phi=90)



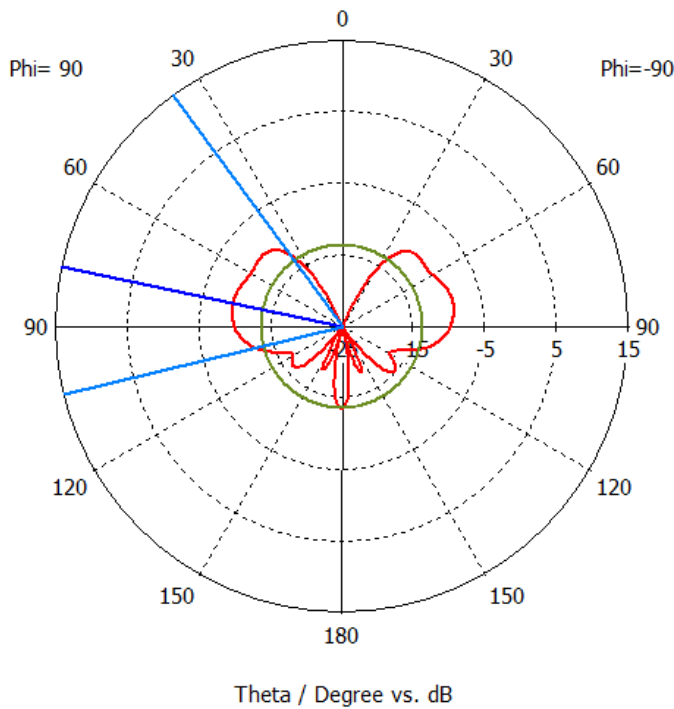
ASI-722DSBO Quad Band Cross Polarized Directional Antenna

Farfield Realized Gain Ludwig 3 Crosspolar (Phi=0)



Frequency = 1.71
Main lobe magnitude = -9.2 dB
Main lobe direction = 79.0 deg.
Angular width (3 dB) = 67.9 deg.
Side lobe level = -4.1 dB

Farfield Realized Gain Ludwig 3 Crosspolar (Phi=90)



Frequency = 1.71
Main lobe magnitude = -9.1 dB
Main lobe direction = 78.0 deg.
Angular width (3 dB) = 67.5 deg.
Side lobe level = -4.1 dB