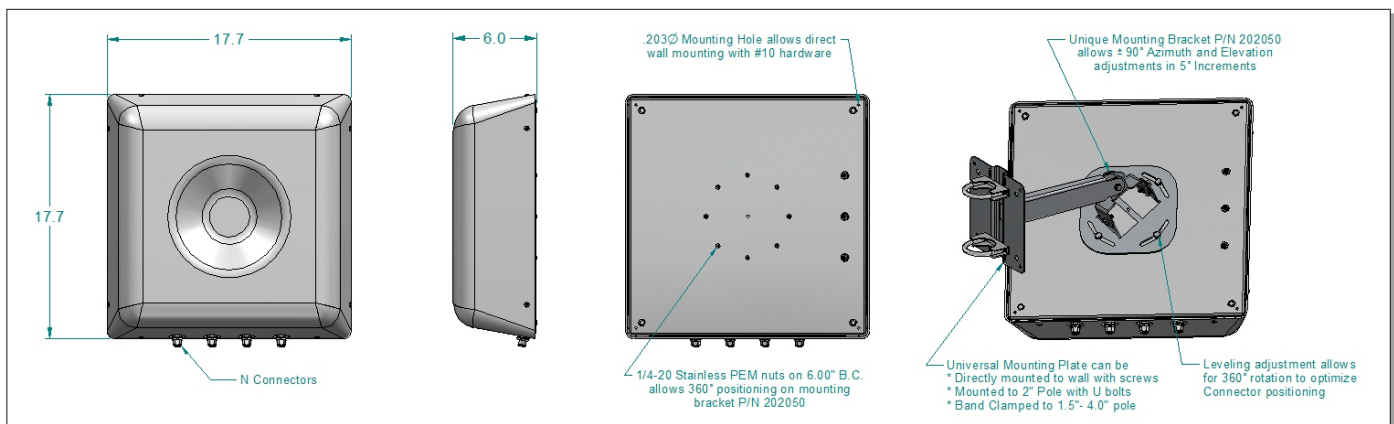


Quad Band Cross Polarized Directional Antenna

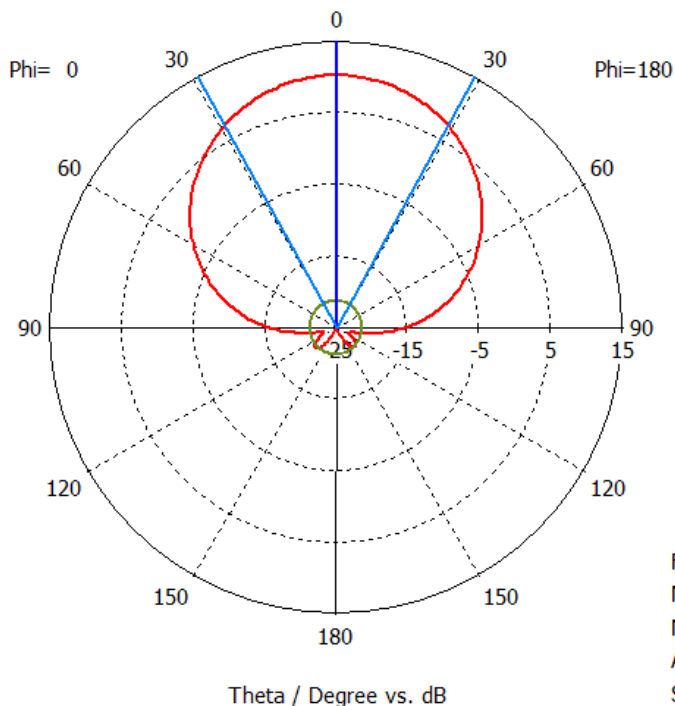
Specifications

Frequency Band	698 MHz to 896 MHz and 1710 to 2170 MHz
Polarization	Linear, Dual Slant 45
VSWR / Impedance	1.5:1 / 50 Ohms
Gain	10 dBi
Port-to-Port Isolation – cross polarized ports	40dB
Port-to-Port Isolation – co-polarized ports	25dB between the low band and high band port
Cross pol gain	Less than -9dBi in forward hemi-sphere
Cross polarized discrimination inside the 3dB co-polarized beamwidth	30dB
3 dB Beamwidth Azimuth and Elevation	52° low band and 47° high band
Front to Back Ratio	20 dB total power
Input Power	250 Watts
Passive Intermodulation (2 x 20W)	IM3: <-160 dBc
Size / Weight	17.7" x 17.7" x 6.0" / 11 lbs. without Mounting Bracket
Connector / Location	Type N x 4 (one per band and polarization)
Mounting	Direct Wall Mount or Full Articulation Mounting Bracket
Application Environment	IP-54



ASI-722QSBO Quad Band Cross Polarized Directional Antenna

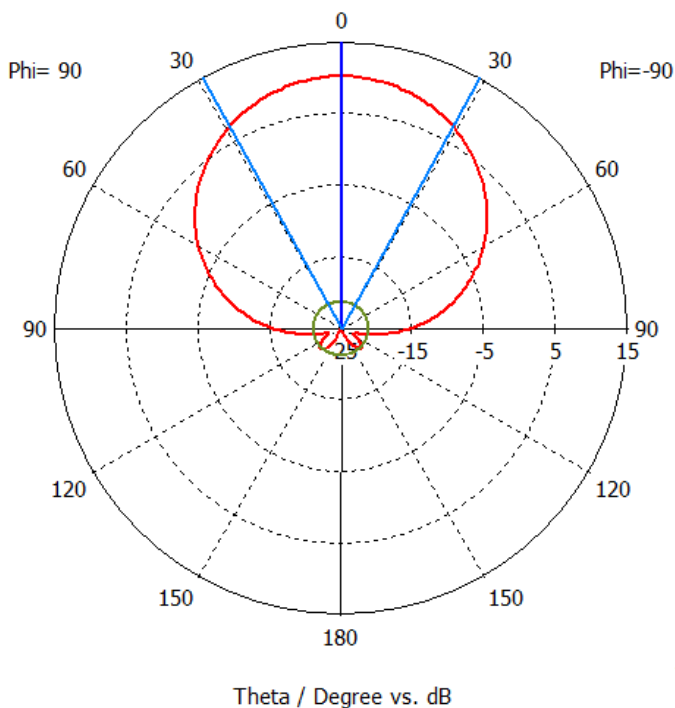
Farfield Realized Gain Ludwig 3 Copolar (Phi=0)



farfield (f=.698) [4]

Frequency = 0.698
Main lobe magnitude = 10.2 dB
Main lobe direction = 0.0 deg.
Angular width (3 dB) = 57.7 deg.
Side lobe level = -31.3 dB

Farfield Realized Gain Ludwig 3 Copolar (Phi=90)

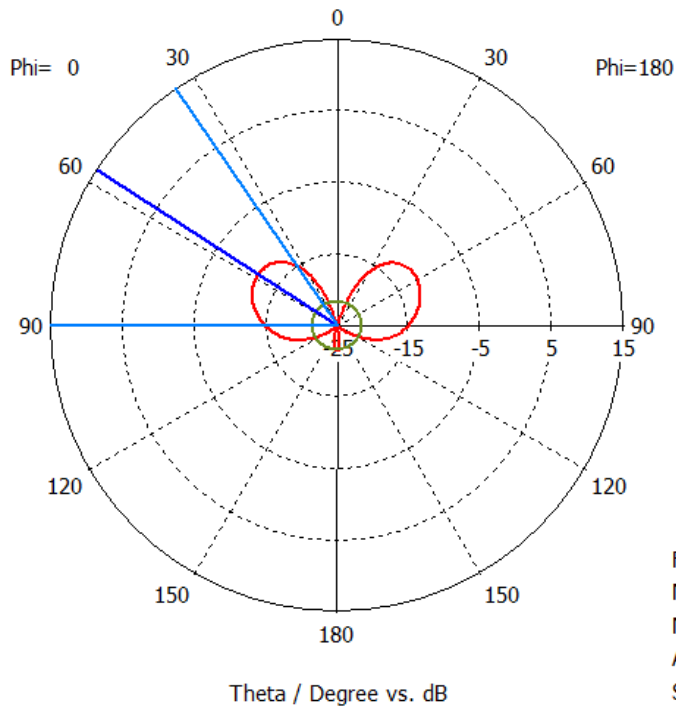


farfield (f=.698) [4]

Frequency = 0.698
Main lobe magnitude = 10.2 dB
Main lobe direction = 0.0 deg.
Angular width (3 dB) = 57.8 deg.
Side lobe level = -31.3 dB

ASI-722QSBO Quad Band Cross Polarized Directional Antenna

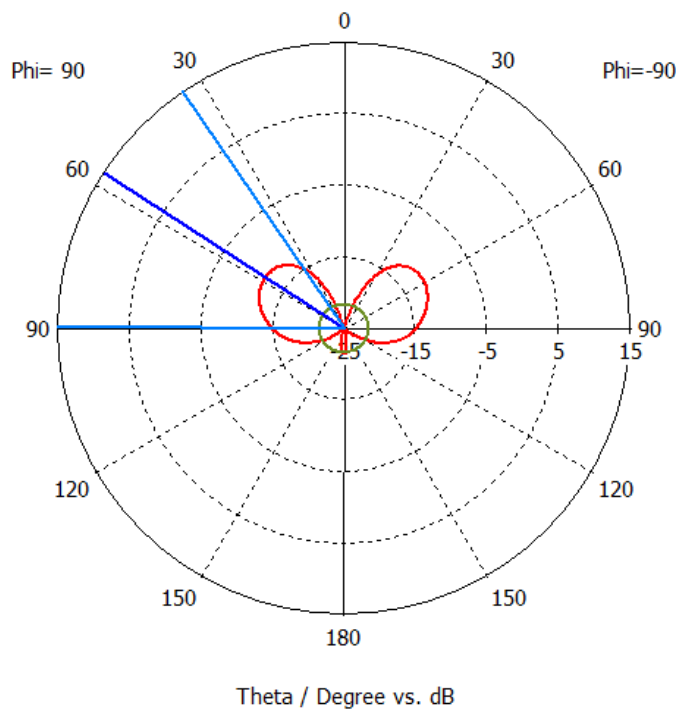
Farfield Realized Gain Ludwig 3 Crosspolar (Phi=0)



farfield (f=.698) [4]

Frequency = 0.698
Main lobe magnitude = -11.9 dB
Main lobe direction = 57.0 deg.
Angular width (3 dB) = 55.4 deg.
Side lobe level = -9.5 dB

Farfield Realized Gain Ludwig 3 Crosspolar (Phi=90)

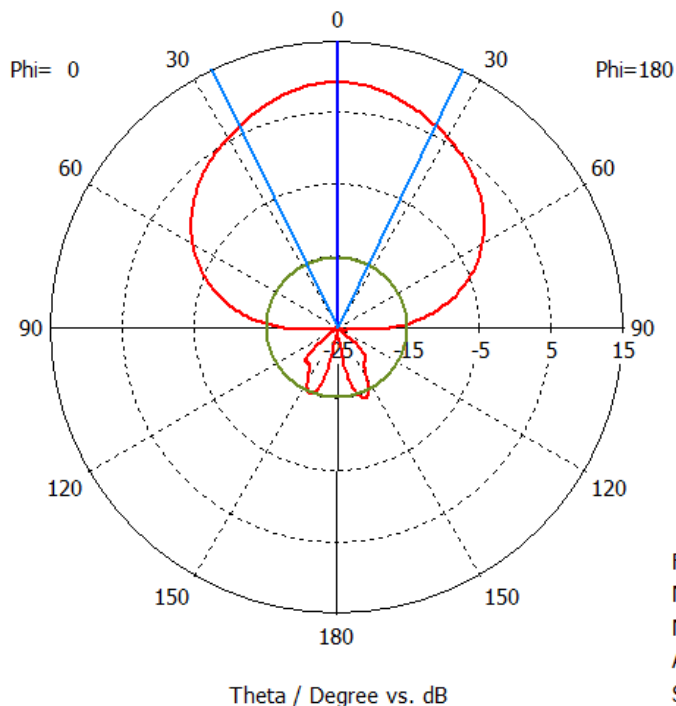


farfield (f=.698) [4]

Frequency = 0.698
Main lobe magnitude = -11.9 dB
Main lobe direction = 57.0 deg.
Angular width (3 dB) = 55.2 deg.
Side lobe level = -9.5 dB

ASI-722QSBO Quad Band Cross Polarized Directional Antenna

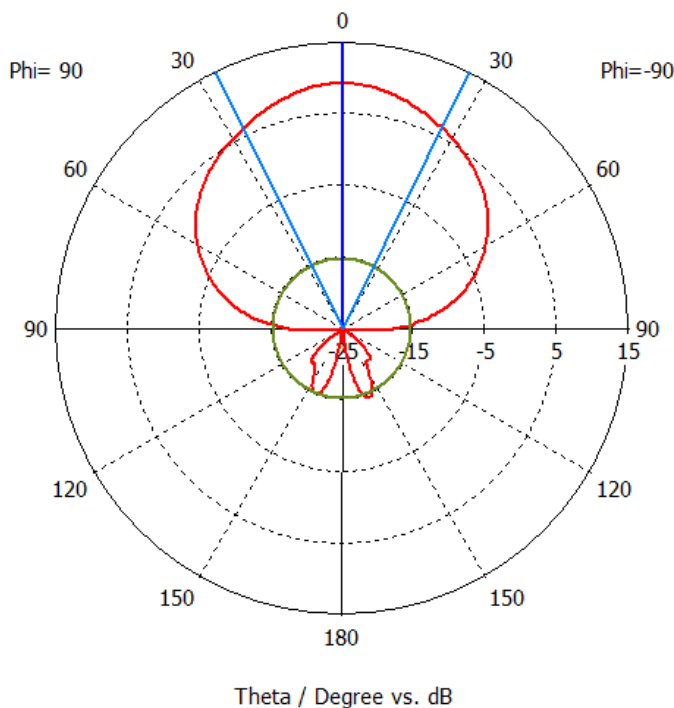
Farfield Realized Gain Ludwig 3 Copolar (Phi=0)



farfield (f=1.71) [2]

Frequency = 1.71
Main lobe magnitude = 9.2 dB
Main lobe direction = 0.0 deg.
Angular width (3 dB) = 52.1 deg.
Side lobe level = -24.4 dB

Farfield Realized Gain Ludwig 3 Copolar (Phi=90)

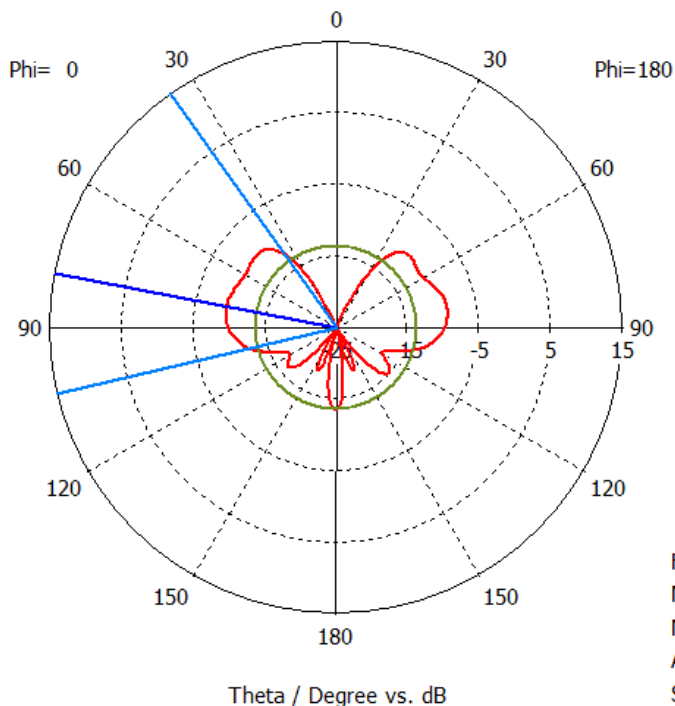


farfield (f=1.71) [2]

Frequency = 1.71
Main lobe magnitude = 9.2 dB
Main lobe direction = 0.0 deg.
Angular width (3 dB) = 52.3 deg.
Side lobe level = -24.4 dB

ASI-722QSBO Quad Band Cross Polarized Directional Antenna

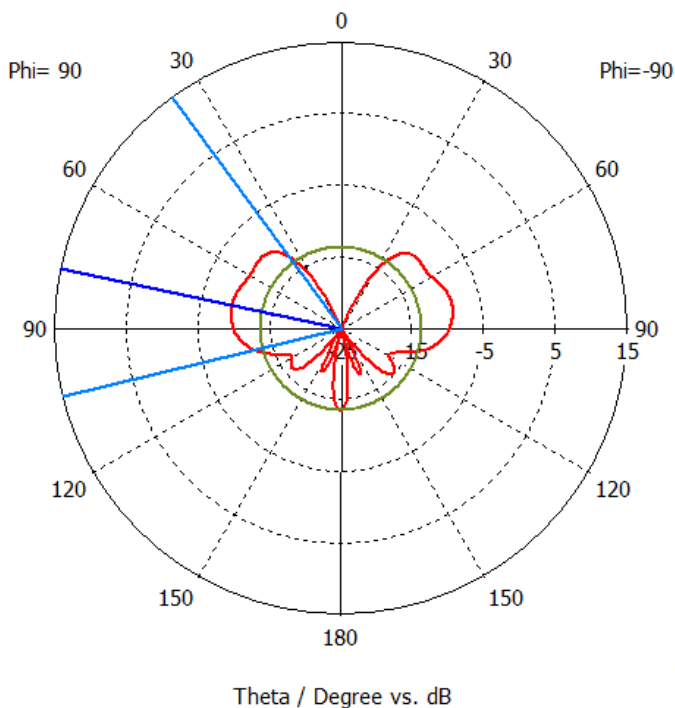
Farfield Realized Gain Ludwig 3 Crosspolar (Phi=0)



farfield (f=1.71) [2]

Frequency = 1.71
Main lobe magnitude = -9.2 dB
Main lobe direction = 79.0 deg.
Angular width (3 dB) = 67.9 deg.
Side lobe level = -4.1 dB

Farfield Realized Gain Ludwig 3 Crosspolar (Phi=90)



farfield (f=1.71) [2]

Frequency = 1.71
Main lobe magnitude = -9.1 dB
Main lobe direction = 78.0 deg.
Angular width (3 dB) = 67.5 deg.
Side lobe level = -4.1 dB